

January 2024



Fund for Innovation in Development

Test, accelerate and scale innovative
solutions against poverty and inequality

The creation of FID



The Fund for Innovation in Development (FID) was officially launched in **December 2020** by President Macron during the **Presidential Council for Development**.



FID is a key initiative in favor of **modernizing France's international solidarity policy**, which is aligned with the recommendations of the report by Deputy **Hervé Berville** submitted in August 2018.



FID is an **independent** grant making body and is governed by a Board of Directors chaired by **Nobel Laureate Esther Duflo**. FID is hosted by the French Development Agency (AFD).

FID's mandate

To explore and spread new development practices including a committed risk-taking approach



A new and ambitious funding mechanism:

- Relying on rigorous evidence of impact
- Accelerating the large scale deployment of impactful solutions for development



A close link with research and researchers:

- To rigorously validate the **potential impact** of funded solutions
- To inform our impact framework



A specific mandate:

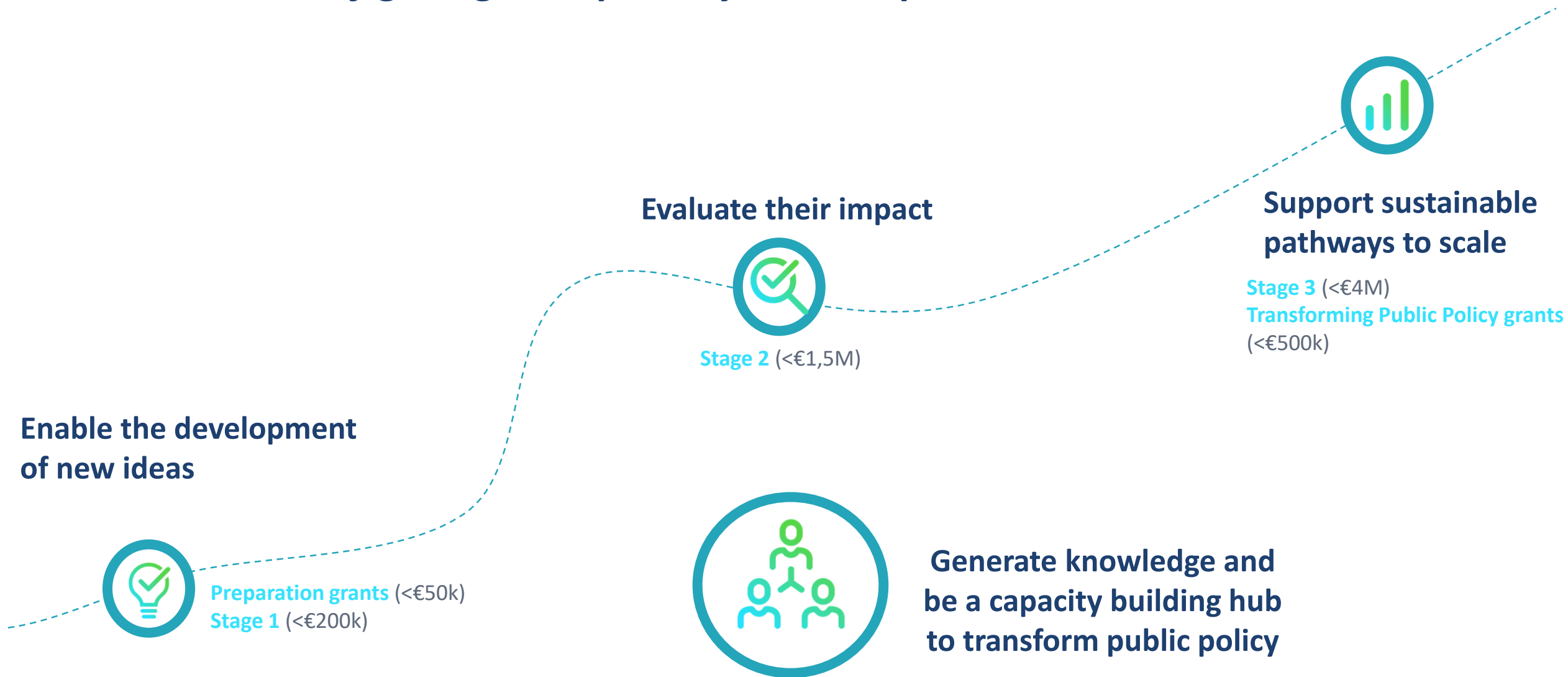
- The fight against poverty and inequality, innovation to transform public policy



Type of funding:

- 100% grant: between 50 k € and 4 million €
- Successive levels of funding at key stages in the development of innovative solutions

FID : a new ground for experimentation to catalyze the most innovative solutions in the fight against poverty and inequalities



Our funding process

What FID funds



Sectors

- All sectors are eligible
- Priority sectors : Education, Health, Climate change and Gender equality



Geographies

- Any low-and-middle-income country
- It gives priority to the least favored and most marginalized territories and populations.



Institutions

- Any type of structure: research institutions, governments, social enterprises, non-profits, social and commercial enterprises
- Regardless of their location



Innovation at the service of the fight against poverty and inequality

- Any solution (social, technological, financial etc.).
- Introducing an improvement over existing approaches (in terms of cost, speed of implementation, feasibility etc.
- For a large number of vulnerable people.

5 stages of funding

0

Stage 0 : Prepare Grants

- (1) Towards preparing a Stage 1 application and supporting the preparation of the piloting phase of innovations.
- (2) Towards preparing a Stage 2 application and supporting the preparation of in-depth experiments and innovation's impact evaluations already piloted.

Up to 50 000 €

1

Stage 1 : Pilot

Innovations that are early in development and need real-world testing to refine the basic model.

Up to 200 000 €

2

Stage 2 : Test and position for scale

Further testing and continued growth of innovations to assess the likelihood that they can achieve both impact and viability at a larger scale.

Up to 1,5M €

3

Stage 3 : Transition to scale

Transition of rigorously tested and validated solutions to widespread scaling.

Up to 4M €

4

TPP : Transforming Public Policy

- (1) Institutionalization of specific innovations; or
- (2) Building the capacity of governments to design, test and deploy rigorously evaluated innovations.

Up to 500 000 €

How FID funds

Projects are evaluated on the basis of 3 criteria



Potential for **impact** and strategy to measure it

Impact on improving the live of people living in poverty (or a clear strategy for generating it).



Cost-effectiveness of the innovation

The ability of a development innovation to demonstrate more impact per euro than the status quo or alternatives. FID will invest in innovations that can demonstrate better results at lower cost or be more effective at addressing the development challenge than alternatives.



Potential for scale and sustainability

The ability of an innovation to be replicated and deployed quickly and efficiently to reach a very large number of beneficiaries.



The standards for each criteria are calibrated to **each funding stage**

The standards for each criteria are calibrated to each stage of funding

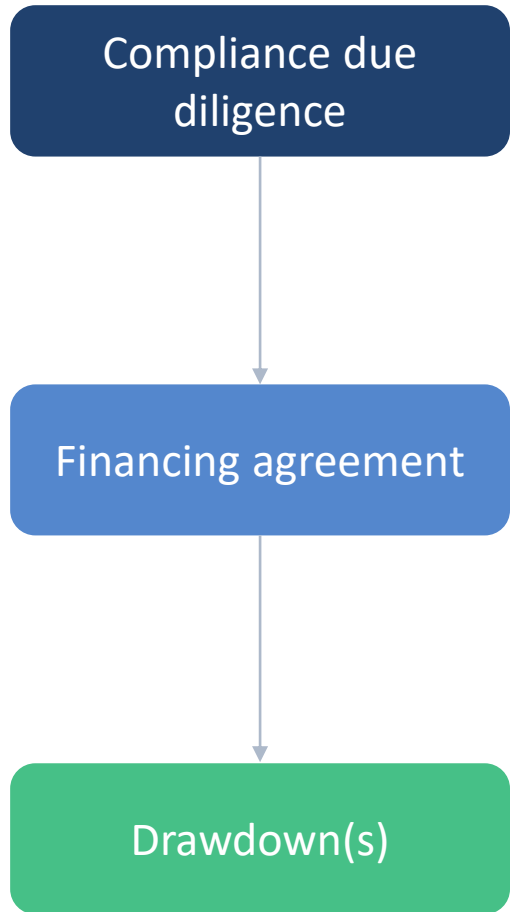
	Prepare Grant	Stage 1	Stage 2	Stage 3
Impact	Theory of change with clear assumptions and supported by evidence + clear M&E strategy with a dedicated budget		An evaluation showing evidence of causal impact through quantitative research methods - as experimental and quasi-experimental methods with a comparison group	
Cost-Effectiveness	Arguments that solution can be faster, cheaper, or more impactful than alternatives	Clear arguments of cost-effectiveness + plans to collect data on costs per unit	Plans to collect data on costs per unit + cost effectiveness analysis	Demonstrated proof of cost-effectiveness
Potential for scale	A vision of pathways for scale	A demonstration of potential to reach scale and pathways to scale	A clear strategy to reach scale and potential to influence public policy	A clear explanation of resources and partnerships needed for a sustainable implementation at scale

Review process



- ✓ A call for projects open throughout the year.
- ✓ Projects selected according to a specific FID process.
- ✓ Governance with a review committee (3 qualified) and a Board (9 members).
- ✓ All applications receive a first response from FID within 2 months after submission
- ✓ In average, grant agreements are signed within in 6,5 months after submission

Compliance due diligence, Financing agreement



A list of documents, depending on the type of entity:

- Legal documents (e.g. articles of association and registration certificate)
- Latest audited accounts
- Etc.

Carried out with the entity receiving the grant, the agreement defines:

- The legal framework of the agreement
- Partnership terms: with or without retrocessions to sub grantees
- The project, its objectives, action plan and associated deliverables
- The budget, expenditure items and terms of payment (by advance or advance + refinancing)
- The suspensive conditions
- Etc.

Payment(s) according to the terms defined in the Financing Agreement

Examples of good practices in applications

Good practices

- ✓ Define explicitly the potential impact on most vulnerable life conditions
- ✓ Describe explicitly how the solution presented is likely to solve the problem in a more cost effective way than existing solutions
- ✓ Present a structured theory of change: clear assumptions and causal relationship between the outputs, outcomes and final impacts
- ✓ Present a clear vision of the pathway to scale and provide elements to ensure the sustainability and replicability of the project
- ✓ Demonstrate clearly what would be FID's added value in case of co-funding
- ✓ Ensure full involvement of local partners / teams

Bad practices

- ✗ Funding is required primarily to cover operating costs not directly related to the innovation (infrastructure, machinery, hardware, etc.)
- ✗ Inappropriate stage of funding

➤ **FID funds projects that have already been set up, that have identified the main partners, that have a completed theory of change, and that have already developed an M&E or evaluation strategy.**

What does a successful application look like?

Prepare Grant towards a Stage 1 (Up to 50 000€)

- ✓ Seeks to support applicants from traditionally marginalized background, with a strong connection to the context of intervention
- ✓ Ideally implemented in one of the 19 priority countries of French public aid
- ✓ A well-documented, data informed development challenge
- ✓ Outstanding innovation idea, supported by a clear theory of change
- ✓ Clear positioning for a Stage 1 i.e. a pilot in real conditions (not a business plan)



Example of activities supported:

- A feasibility study
- Intervention design
- Development of data systems to explore the innovation's potential
- Hiring research or policy staff to do any of these activities

What does a successful application look like?

Prepare Grant towards a Stage 2 (Up to 50 000€)

- ✓ Seeks to support applicants from traditionally marginalized background, with a strong connection to the context of intervention
- ✓ Ideally implemented in one of the 19 priority countries of French public aid
- ✓ A well-documented, data informed development challenge
- ✓ A solutions already having been piloted in real conditions with promising results
- ✓ Clear positioning for a Stage 2 funding
 - Preparing for an impact evaluation
 - Preparing for an expansion or replication of a programme
 - Preparing to test models of pathways to scale



Example of activities supported:

- A feasibility study for a randomized controlled trial
- Intervention design
- Sampling and power calculations
- Establishing necessary partnerships for the impact evaluation
- Development of data systems to explore the innovation's potential
- Hiring research or policy staff to do any of these activities

What does a successful application look like?

Stage 1 (Up to 200 000€)

- ✓ Pilot of an ***already-prototyped*** solution
- ✓ Theory of Change with clear assumptions and supported by evidence (ideally from peer-reviewed and published literature)
- ✓ Indicators and data collection plan to validate assumptions (i.e. targeting, implementation, results, costs)
- ✓ Convincing arguments of cost-effectiveness compared to existing solutions
- ✓ A demonstration of potential to reach scale and pathways to scale



Examples of activities supported:

- Pilot to study the potential for adhesion and appropriation of the solution
- Users' experience
- New implementation models
- Actual costs
- Measurement strategy

What does a successful application look like?

Stage 2 (Up to 1 500 000€)

- ✓ An **already-piloted solution** with convincing results
- ✓ The impact evaluation is the central component of the proposal
- ✓ Details on the evaluation method and design (experimental or quasi-experimental design, different treatment arms, and power calculations to justify sample size, research questions)
 - ✗ Pre-post assessment will not be considered as rigorous enough at this stage
- ✓ Impact indicators and data collection plan, to measure intermediate and final impact, behavioral change, costs
- ✓ A strong research partner (→research institute, university, an organization with expertise in impact evaluation)
- ✓ Committed local partner for both the evaluation and the implementation at scale
- ✓ A clear strategy to reach scale and have policy impact



Examples of activities supported:

- Impact evaluation
- Program expansion or replication
- Testing implementation models at scale

What does a successful application look like?

Stage 3 (Up to 4 000 000€)

- ✓ An ***already-tested solution***, with demonstrated causal impact and proof of cost-effectiveness
 - ✗ Internal descriptive result data will not be sufficient. It must be evidence from an impact evaluation with counterfactual.
- ✓ A clear explanation of resources needed for sustainable implementation at scale
- ✓ Committed (public) partners



Examples of activities supported:

- Rigorous testing of innovation in new contexts
- Testing of cost-effectiveness and operations at larger scale
- Capacity building for long-term sustainability

What does a successful application look like?

Transforming Public Policy – Type 1 (Up 500 000€)

Focused on the **institutionalization of specific evidence-based innovations** with demonstrated cost-effectiveness and scalability into public policy at large scale

- ✓ Solution has already been tested and evaluated
- ✓ Objective is to develop capacity to « internalize » the solution within governments

Opportunities for a TPP Type 1

- ✓ Before or during a scale-up
- ✓ In prevision of an important change in administration

What does a successful application look like?

Transforming Public Policy – Type 2 (Up to 500 000€)

Focused on **strengthening the capacity of low- and middle-income countries' governments** to design, test, pilot, and scale evidence-based innovations

- ✓ Objective is to create a pipeline of evidence-informed solutions within governments

Opportunities for a TPP Type 2

- ✓ When an administration is particularly aligned with evidence-based approaches
- ✓ Existence of identified champions within the administration

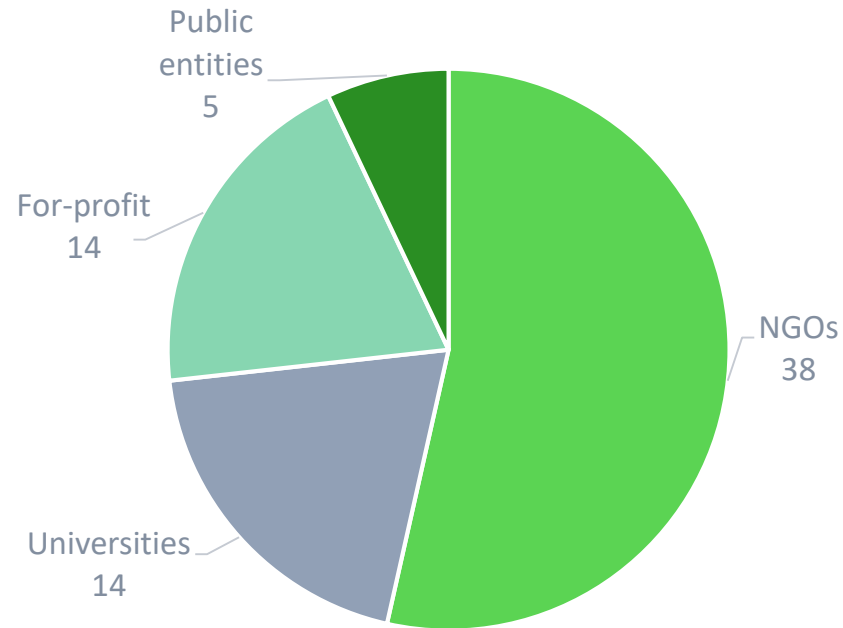
***FID's applications
and projects at
a glance***

Portfolio

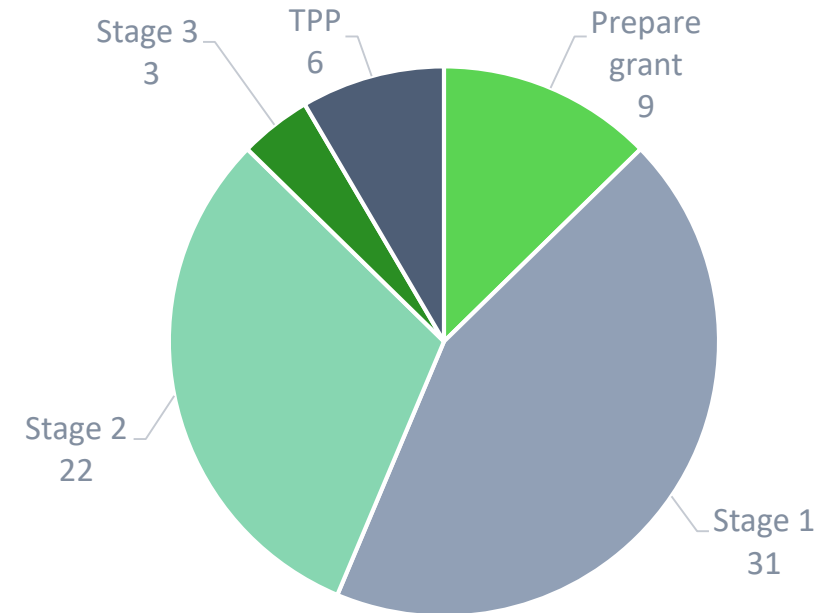
71 projects selected by FID for a total of 33 M €



By type of entity leading the project



By stage of funding



Key figures

71

Projects selected

62

Organizations

33

Million € granted

1/2

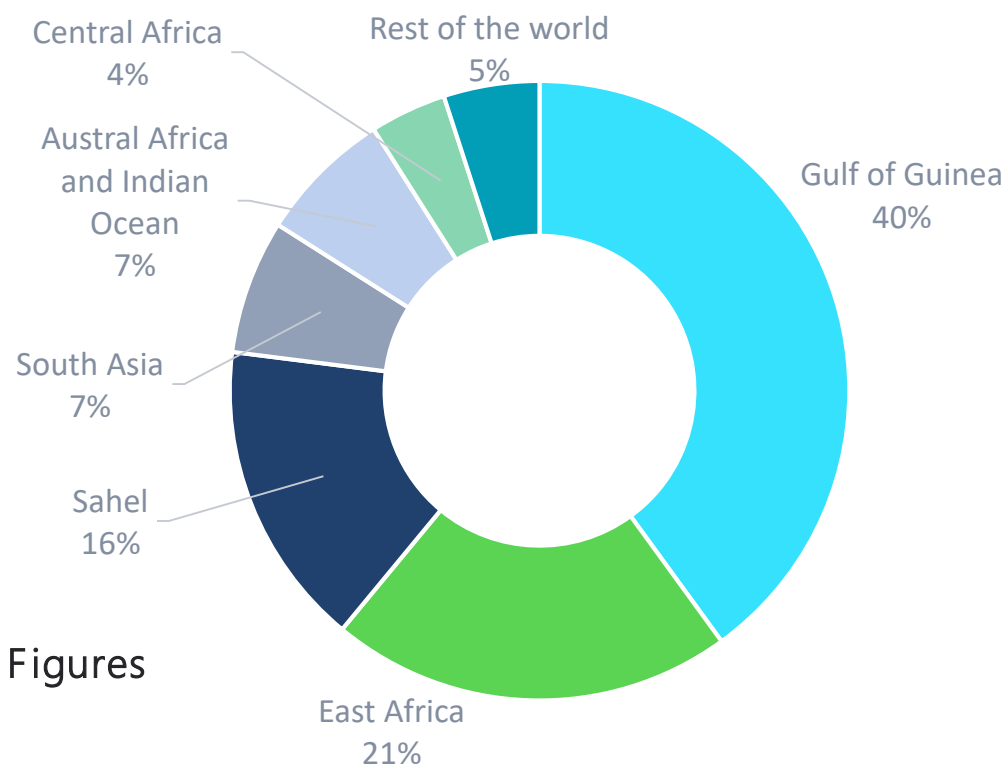
Projects lead by NGOs

Geographies and sectors of intervention

Portfolio with an African dominance, with more than half the projects located in West African countries



By region



Key Figures

4/5

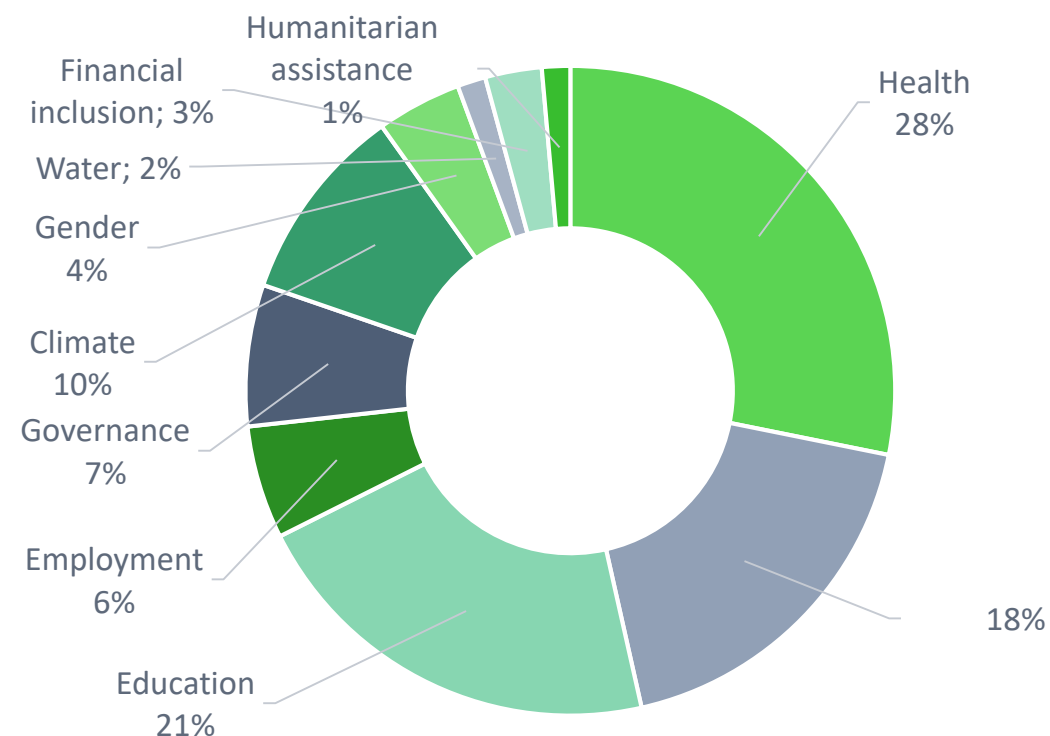
Projects located in Africa

29

Represented countries
*candidate teams as intervention sites



By sectors



Key figures

60%

Of projects located in Least Developed countries

45

Projects in a priority sector

Examples of projects involving African research centers and universities



Bamboo charcoal for cooking, a step towards curbing deforestation in Uganda (Prep)
Uganda Christian University



Health navigation: improving access to healthcare for the most vulnerable people in Senegal (Pilot, Institut Santé et Développement)



Ethiopia's community-based health insurance based on a flexible contribution system: the way to equitable access to care and better health services (Testing and preparation for scaling up, Jimma University & Partnership for Economic Policy)

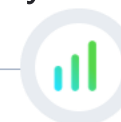
Enable the development of new ideas



Evaluate their impact



Support sustainable pathways to scale



Design microorganisms to durably improve crop cultivation in Ethiopia (Prepare grant, Arba Minch)



Evaluation of a mosquito-repellent ointment to fight malaria in Burkina Faso
Institute of Health Sciences (Testing and preparation for scaling up, Innovations for Poverty Action, Maia Africa, Université Paris Dauphine - PSL)



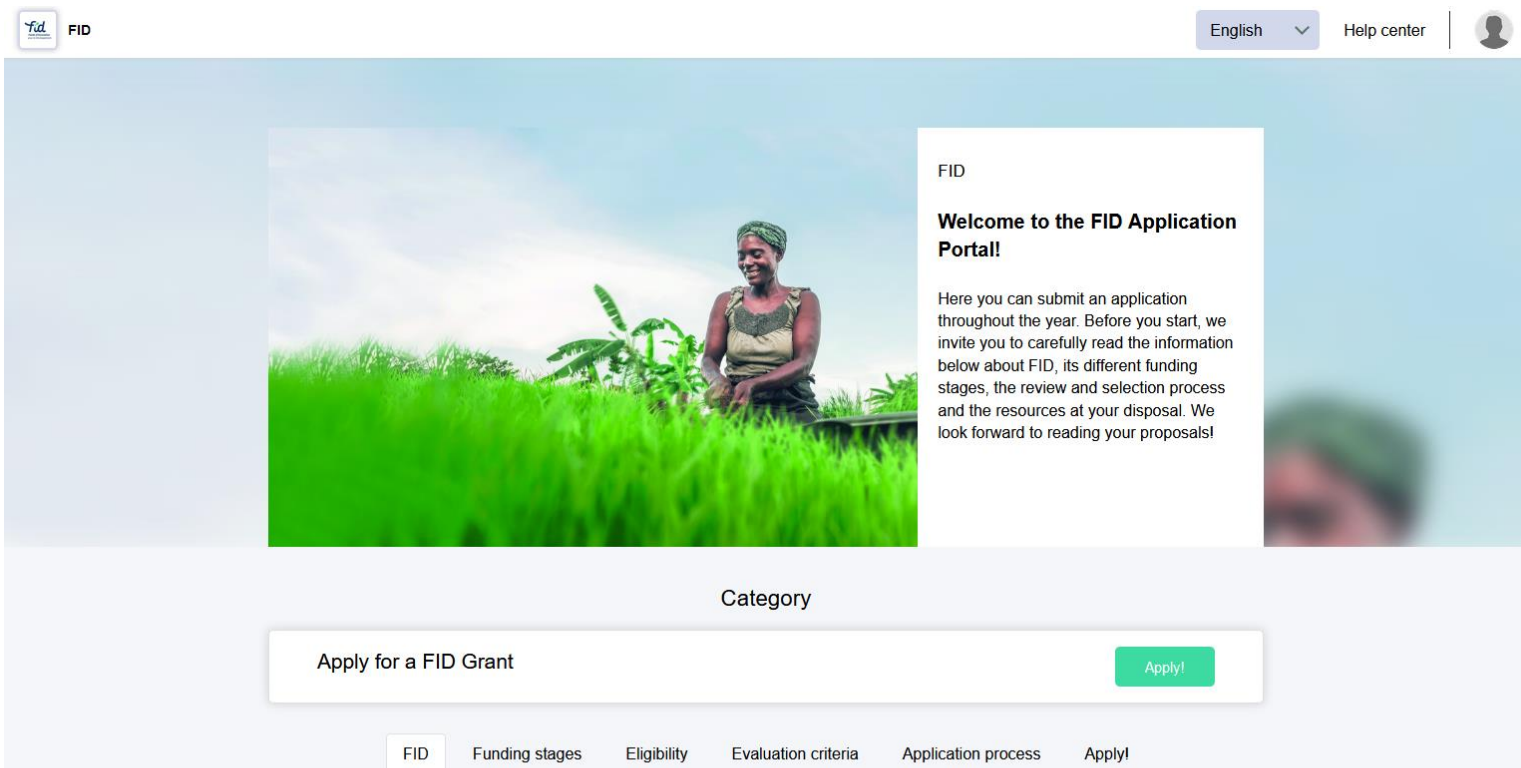
Targeted education in Côte d'Ivoire (Scaling up, TaRL Africa)

Find all our supported projects on [our website](#)



Applying for FID funding : a practical guide

Our new application portal



The [Fund for Innovation in Development](#) (FID) is a new initiative that contributes to reducing global poverty and inequality.

FID enables innovators and researchers to test new ideas, build rigorous evidence of what works, and scale the highest-impact and most cost-effective solutions.

To know more about FID, its events, and funded innovations, you can visit [the FID website](#).

An individual application account

- Easy-to-access information on the application process, selection criteria, and related resources
- Possibility to create a personal account and follow the application process online

Our tip



Be sure to download all of the resources available to you and read all of the information available to you about the stages, eligibility criteria, and the IDF mandate before you begin!

Still need help ?

[Watch a tutorial video here](#)

Our new application portal

The screenshot displays the 'Our new application portal' interface. At the top, there is a header with the 'fid' logo, 'FID', a language selector set to 'English', a 'Help center' link, and a user profile icon. Below the header is a progress bar with four numbered steps: 1 (green), 2 (green), 3 (green), and 4 (dark grey). The main content area is titled 'Information about the applicant organization' with a reference number '50bdab57aa'. It contains several form fields: 'Applicant Organization Name *' with a placeholder 'Veuillez renseigner votre réponse' and a red note 'This field is required'; 'Applicant Organization Type *' with a dropdown menu 'Choose an option' and a red note 'This field is required'; 'Contact information' section with 'Applicant Organization Website' (placeholder 'Fill in your answer here') and 'In which country is your organization located? *' (dropdown 'Choose an option' with a red note 'This field is required'); and 'Address *' (placeholder 'Fill in your answer here'). On the right side, there is a sidebar with a green button 'Invite a team member' and a progress indicator showing 'This step is complete at: 0 %' with a list of missing information items: 'Applicant Organization Name', 'Applicant Organization Type', 'In which country is your organization located?', 'Address', 'Country', and 'How many employees are...'. Each item has a blue arrow pointing right.

New application forms

➤ Revisited application forms:

- Better tailored for each stage of funding
- Possibility to upload an Excel budget and diagram of the Theory of change

➤ Possibility to download a Word version and prepare the application offline

➤ Possibility to work collaboratively on the online application

Thank you for listening!

✉ contact@fundinnovation.dev

🔗 fundinnovation.dev

in www.linkedin.com/company/fundinnovationdev/

🐦 twitter.com/FundInnovDev